

valse de Gwendal

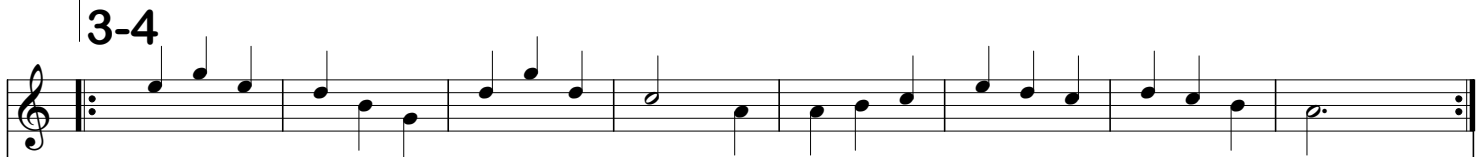
Valse "croisée" debutant avec Fa et Do

composition jean-marc Siche

site internet diatofiddle.com



P			7 6 7				8- 9	7'.
T	7 6' 8	9 7' 8		7.—	7 6' 8	9- 8		
	A a a	F f f	G g g	A a a	A a a	F f f	G g g	C c c



P	7' 8' 7'	8 7 6	8 9 8				8 6' 7	
T				8- 7	7 6' 8	9 7' 8		7.—
	C c c	G g g	G g g	A a a	A a a	F f f	G g g	A a a