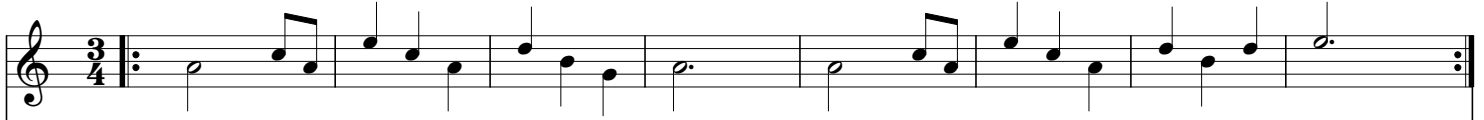


# valse de Maili

Valse "croisée" debutant avec Croches

composition jean-marc Siche

site internet diatofiddle



P			8 7 6				8 7 8	
T	7- 87	9 8 7		7.—	7- 87	9 8 7		9.—
	A a a	A a a	G g g	A a a	A a a	A a a	G g g	A a a

3-4



P		8- 7		7.—			6 7 6	
T	9- 8		8- 78		7- 87	9 8 7		7.—
	A a a	G g g	A a a	E e e	A a a	A a a	G g g	A a a